

Rotating Planet textures with Panorama Tools Photoshop Plugin

Installation

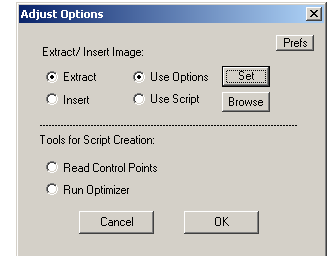
Copy both files (pano12.dll and adjust.8bf) to you Photoshop filter plugins folder.

Requirements

- Your image must be RGB
- Assumes your image is a full 360x180° image with equirectangular projection

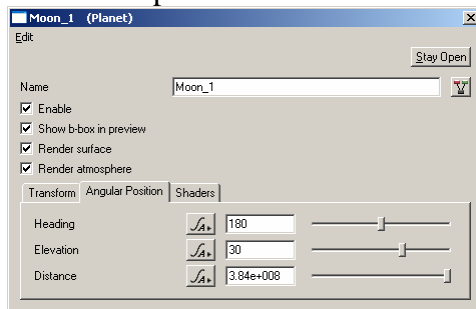
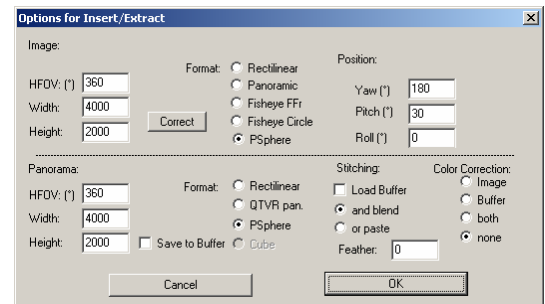
Transforming the image

- Open image file
- Filter > Panorama Tools > Adjust
 - Check Extract and Use Options
 - You will also need to click on “Prefs” to check the preferences and “Set” to set the options for adjusting the image



Options

- Image Height and width should be set to the same as your image.
- FOV for both images = 360°
- Format for both = pshphere
- Set the yaw, pitch and roll angles to match the position of the planet



Prefs

Select only option (a)

